



POOL GUNS

Prince[®] SG Spool Gun

Prince[®] SG spool gun...when economy counts! Larger and more powerful than the Sidewinder[®] and utilizes a 1 lb wire spool for increased productivity, the Prince[®] SG is the most economical spool gun available anywhere.

Lighter than the competition and ready for any job, the Prince[®] SG is up to any challenge big or small, aluminum or steel. The Prince[®] SG includes genuine Cobra[®] consumables and more than 35 years of MK's spool gun expertise packaged into a ready to go, simple solution for all your spool gun needs.



Wire retainer **prevents** wire backlash.

Wire speed control in handle.

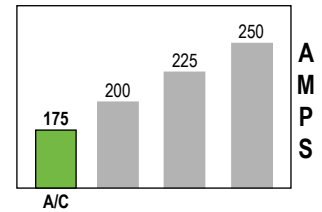
3/4 turn potentiometer provides easy control over a wide range of welding conditions.

Quick release cover removes in second for changing spool.

Uses 1/4" consumables.

Rated Output determined by the gun having an Air Cooled (A/C) barrel.

Duty Cycle 60%



Most Popular Accessories

- Gas valve installation and removal tool (931-0105)
- Drive roll installation and removal tool (931-0100)
- 5-piece liner package (931-0137)
- Heavy duty spool gun brake spring for hard wires (005-0682)

See the accessories section for additional gas cups, barrels and contact tips.

MODEL NUMBER	RATED OUTPUT	WIRE FEED SPEED	WIRE DIAMETER CAPACITY	BOXED DIMENSIONS	BOXED WEIGHT
416-725	25 ft (7.6 m)	175 Amps @ 60%	900 IPM	.023" to .045" solid and hard wire (0.6 ~ 1.2 mm)	25 ft: 26 x 12 x 5 in (660 x 305 x 127 mm)
416-750	50 ft (15.2 m)				

GUN LEAD ASSEMBLY COMPONENTS

LENGTH	GAS HOSE	CONTROL CABLE	POWER CABLE
25 ft (4.6 m)	552-0244-25	005-0269	843-0650-25
50 ft (7.6 m)	552-0244-50	005-0272	843-0650-50

Spool Gun Adapter Selectors



005-0264
Generic, 24VAC
All Source



005-0676
Lincoln, 42VAC
14-Pin C/D Trigger



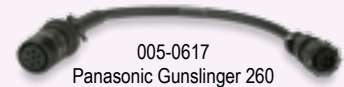
005-0261
Miller, 24VAC
14-Pin A/B Trigger



001-3066 MK200 Contactor Box



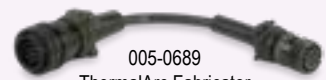
001-3062 WC-1 Spool Gun Control



005-0617
Panasonic Gunslinger 260



005-0206
ESAB MigMaster 250



005-0689
ThermalArc Fabricator